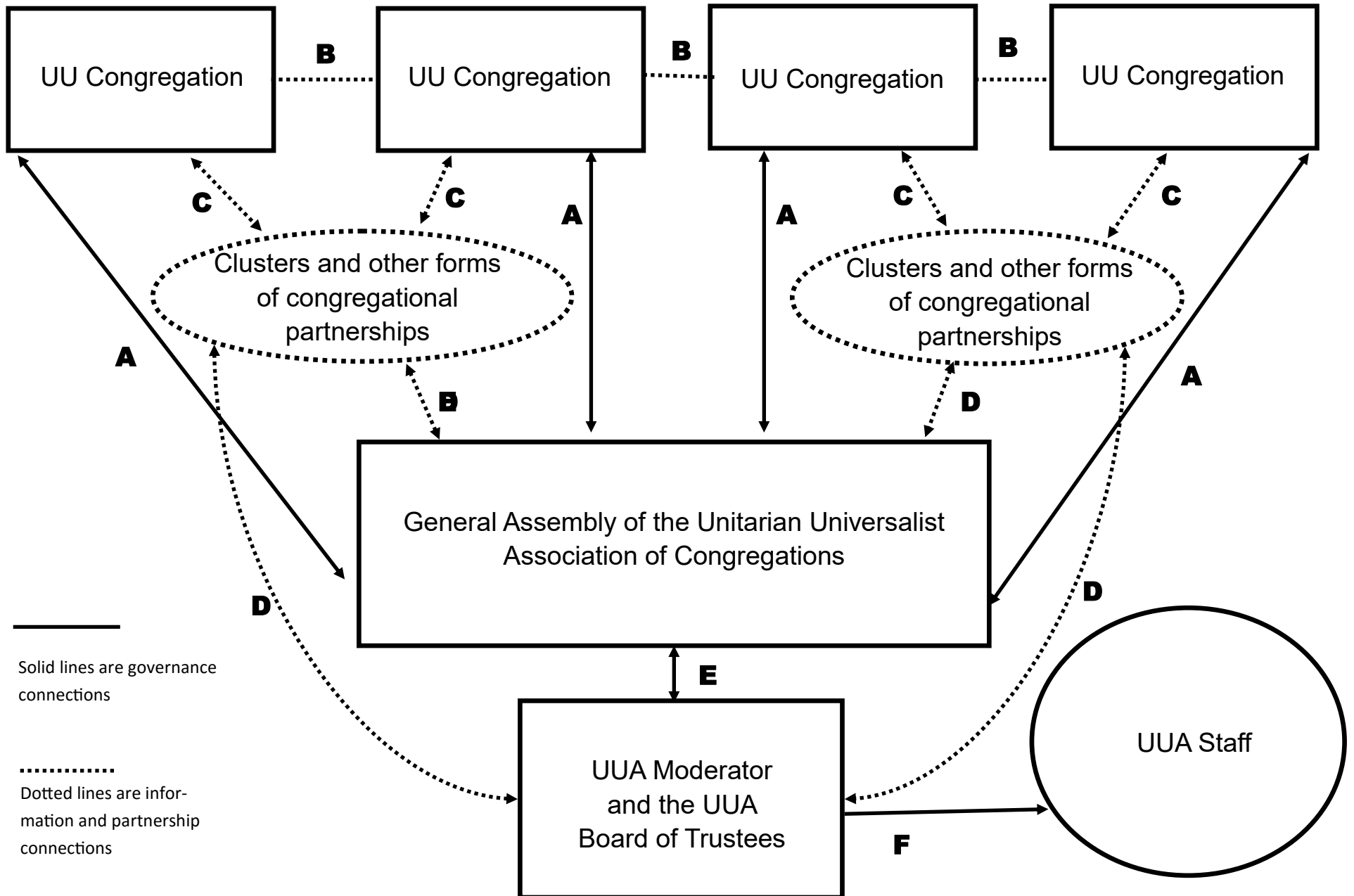


Governance and Information Connections for the Central East Region



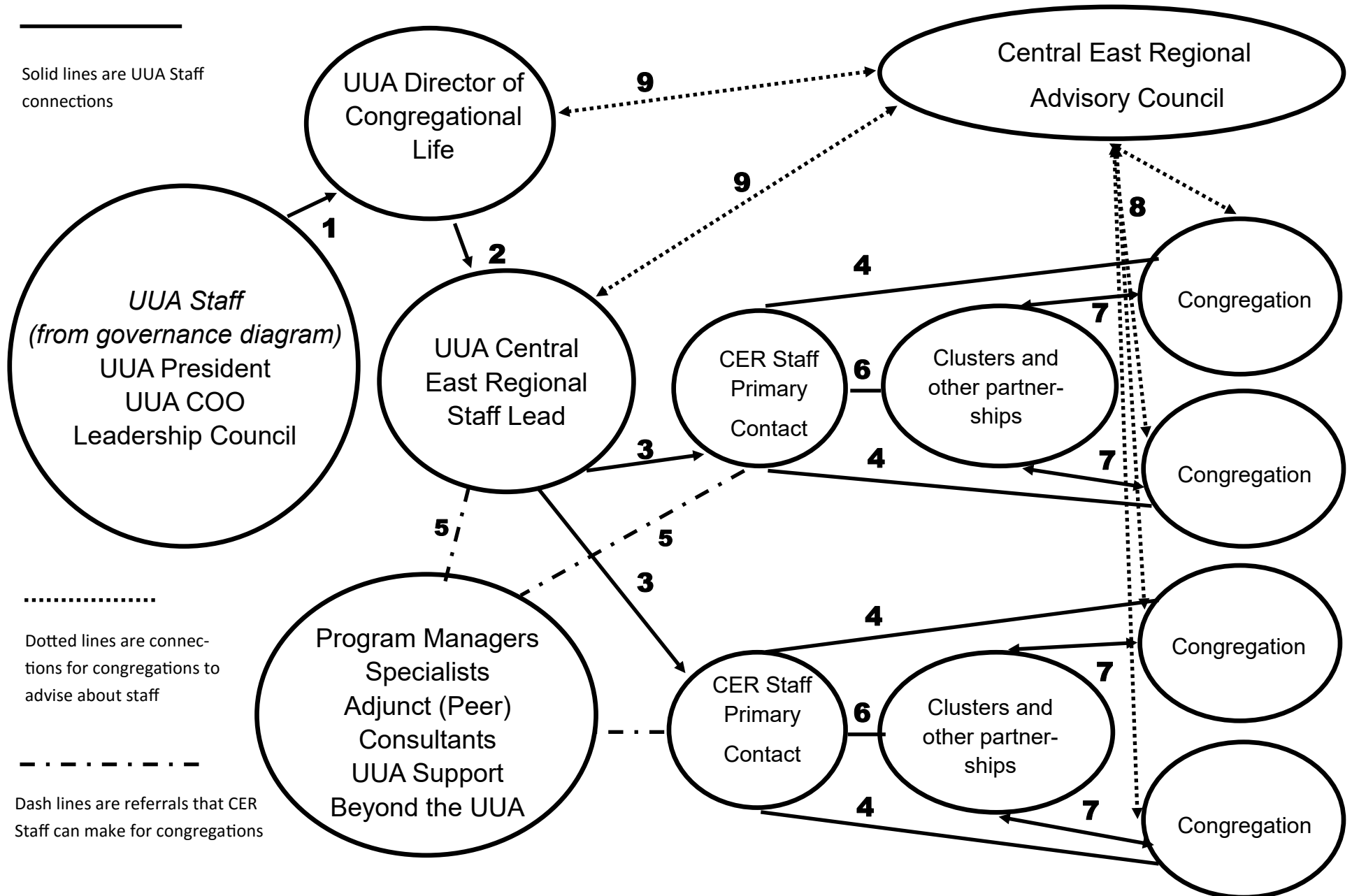
Proposed Governance for the Central East Region of the UUA

Key

- A. Congregations have a direct governance relationship with the UUA by sending delegates to vote on the business of the Association at General Assembly, either in person or virtually. This is the primary governance relationship of the Central East Region of the UUA. The GA delegates elect the UUA Board of Trustees, the UUA President, and the UUA Moderator. Each congregation is awarded delegates based on membership size.
- B. Every congregation is in a covenantal but informal relationship with every other Unitarian Universalist Congregation, and can collaborate, share ideas, and work together to ensure their priorities are addressed by the UUA. Any 15 congregations can put an item on the Agenda of the UUA General Assembly.
- C. There are many different forms of inter-congregational collaboration and partnership in our region, including geographical congregational clusters. New forms of congregational partnerships will continue to develop. These partnerships allow congregations to share ideas and name challenges that they share. However these develop, they allow congregations to build the relationships that will allow them to participate fully in the Governance of our Association, including building the necessary partnership between 15 congregations to put an item on the UUA General Assembly Agenda. While CER Regional Staff do not have a governance role, they do support the building of all kinds of congregational partnerships.
- D. The many different forms of inter-congregational partnerships, including clusters, can also provide a communications link for congregations with the wider movement of Unitarian Universalism, including the actions of the UUA General Assembly, the UUA Board of Trustees, and the UUA Staff. These partnerships give congregations the opportunities to discuss issues of the Association and wider movement, and determine what is collaborate to ensure their voices are heard. While the CER Regional Staff do not have a governance role, they do support congregations and partnerships between congregations in accessing and understanding information about the UUA and the wider Unitarian Universalist movement.
- E. The UUA Board of Trustees is elected by the General Assembly, and is responsible to follow the direction of the General Assembly. They also prepare the Agenda for the General Assembly, and the UUA Moderator leads the Board and serves as the Chief Governance Officer of the UUA. They also determine the Agenda for the UUA General Assembly.
- F. The UUA Board of Trustees gives guidance to the UUA Staff, through the UUA President and the UUA Chief Operating Officer, on the Ends (Goals) and Limitations (Guidance) on the work of the UUA.

Dotted Lines are information and relationship linkages, Solid lines are governance linkages

Operations (Ministry) of the Central East Region of the UUA



Operations (Ministry) of the Central East Region of the UUA

Key

1. The UUA President, Chief Operating Officer, and the Leadership Council supervise how the UUA, through the Director of Congregational Life, support our congregations in their missions of living Unitarian Universalism in their communities and beyond, as well as implement the direction of the UUA General Assembly and the Board of Trustees.
2. The UUA Director of Congregational Life supervises the Central East Regional Lead in designing and directing how the Central East Regional Staff support congregations and encourage the healthy growth of Unitarian Universalism within the Central East Region.
3. The Central East (CER) Regional Lead provides direction and supervision to the CER Primary Contacts in supporting congregations in their health and growth as UU Communities.
4. CER Primary Contacts are UUA Staff members who directly support congregations (25-30 each) as a generalist consultant and in accessing the support of the UUA and beyond in their health and growth, and is in long-term relationship with the congregation. Congregations can also give the Primary Contact direct feedback on their needs and the quality of the support.
5. Both the CER Regional Lead and the CER Primary Contact are in relationship with a wide range of UUA Consultants, CER Adjunct (Peer) Consultants, CER Staff Members (Program Managers and Specialists) and outside resources to help their Primary Contact congregations move towards health and growth, and can both consult on behalf of the congregations and make referrals to these resources when appropriate.
6. CER Primary Contacts support clusters and other forms of congregational partnerships in developing programming and support that meet the needs of the congregations of that cluster or partnership.
7. Congregations participate in clusters and other forms of congregational partnerships in different ways in our region, to build relationship between one another and to participate in regional programming together.
8. The Central East Regional Advisory Council are leaders chosen from congregations of the Central East Region to advise the CER Regional Lead and the Director of Congregational Life on how well the CER Staff are supporting the UU Congregations of the Central East Region in moving towards health and growth. They conduct broad based and focused surveys of congregations and report the results to the UUA Staff. Congregations can also contact them directly with feedback
9. The CER Regional Lead and the UUA Director of Congregational Life are advised by the CER Advisory Council on the needs of and support received by the UU Congregations of the Central East Region from the CER and UUA Staff.

**Who are the people currently in the positions within these diagrams?
How do we contact them?**

1. UUA President, Rev. Peter Morales — president@uua.org
2. UUA Moderator, James (Jim) Key — moderator@uua.org
3. UUA Board of Trustees — board@uua.org
4. UUA Chief Operating Officer, Rev. Harlan Limpert — coo@uua.org
5. UUA Director of Congregational Life, Rev. Scott Tayler — stayler@uua.org
6. UUA Central East Regional Lead, Rev. Joan Van Becelaere — jvanbecelaere@uua.org
7. CER Primary Contacts and Program Staff Specialists:
 - A. Rev. David Pyle — dpyle@uua.org
 - B. Pat Infante — pinfante@uua.org
 - C. Rev. Megan Foley — mfoley@uua.org
 - D. Andrea Lerner — alerner@uua.org
 - E. Rev. Renee Ruchotzke — rruchotzke@uua.org
 - F. Evin Carvill-Ziemer — eziemer@uua.org
 - G. Rev. Hope Johnson — hjohnson@uua.org
 - H. Beth Casebolt — bcasebolt@uua.org
 - J. Raziq Brown — rbrown@uua.org
8. To contact the Central East Regional Congregational Life Advisory Council (CLAC) please visit:
<http://www.uua.org/central-east/regionalization/congregational-life-advisory-council-clac>